



# Installation Guide

POLYMAC



**MAC**  
METAL ARCHITECTURAL

THE LOOK AND  
RICHNESS OF WOOD  
without the maintenance!



## ATTENTION

## PROTECTION

The material may contain sharp edges. For this reason, we recommend that you wear the appropriate protective equipment: safety harness, safety boots, hard hat, safety glasses, and gloves.



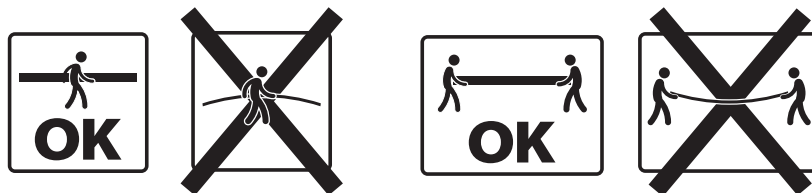
## WARRANTY

FOR THE WARRANTY TO BE APPLICABLE, INSTALLATION MUST BE CARRIED OUT IN ACCORDANCE WITH THE STANDARDS SET OUT IN THE UPDATED BUILDING CODE, ALONG WITH THE MANUFACTURER'S RECOMMENDATIONS.

If a problem arises during profile installation, it is important to notify the distributor agent before the installation of 180 sq. ft. (2 boxes) to ensure that the warranty applies, and also to ensure that there are no corrections to be made to the installation surface.

## HANDLING

Handle sheets with care. Always lift sheets vertically, not horizontally, to prevent them from bending or warping. Two or more people are recommended, depending on length.



## PACKAGING HANDLING

To limit the risk of material breakage, it is important to follow certain rules when when handling packaging:

1. Keep movement of materials to a minimum before installation.
2. Always take particular care when transporting panels from one point to avoid bending the panels.
3. Use a forklift with forks adjusted to maximum width to handle panel packs of up to 20 ft.
4. Beyond this length, use a fork-lift truck with boom and loading bar, or a crane.



HANDLING PACKAGES  
OF UP TO  
MAXIMUM OF 20 FT



HANDLING PACKAGES  
OF 20 FT AND OVER

## ORDER INTAKE & INSPECTION

It is the customer's responsibility to inspect the order upon receipt. In the event of an error or damage to a panel, it is important to notify the distributor as soon as possible so that the situation can be rectified.

## STORAGE

To preserve the aesthetic and physical properties of MAC Metal Architectural Polymac profile, it is important to observe certain storage rules.

If panels cannot be installed immediately after delivery, store them indoors in a dry place, on a flat, well-ventilated surface. Keep movement to a minimum to minimize the risk of breakage.

Outdoor storage is the customer's responsibility. If outdoor storage is absolutely necessary, place the panels flat in a location that is not directly exposed to sunlight or extreme temperatures. These factors can cause the protective film to adhere more tightly to the panels, making it difficult to remove and leaving traces of adhesive on the surface of the product when removed. In addition, the accumulation of stagnant water on packaging can contribute to its deterioration, so it's vital to protect your order.

It is important to follow these recommendations:

1. If possible, choose a level, out-of-the-way location where the panels will not interfere with work on the site, and with limited exposure to the sun.
2. Cover the floor with plastic sheeting to prevent moisture from the ground from reaching the panels.
3. Place panels approx. 6 in (152 mm) from the floor to allow air circulation.
4. Raise part of the panels to allow rainwater to run off.
5. Protect the panels with a cloth. Do not use plastic, as this can lead to condensation.

## ZIP SYSTEM, INSULATED R-SHEATHING PANELS

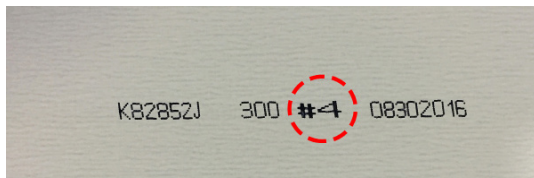
Installation of MAC coatings on Zip System, Insulated R Sheathing or similar dual-composition panels comprising a softer-than-wood compound is not recommended.

This type of panel does not provide a rigid installation base for MAC products and allows warping when exposed to sunlight depending on temperature, which then results in warping of the cladding panels.

## WOOD COLLECTION INSTALLATION

All the colors in the WOOD COLLECTION are available in 3 planks of varying hues and shades. Each board is identified on the back by a sequence of bold numbers from 7 to 9, preceded by the pound sign #.

\* It's important to pay particular attention to this and to install the planks randomly to optimize the wood effect. Never repeat the same installation sequence to avoid creating a tapestry effect.



## 1. TOOLS

To get the job done right, you'll need a bending machine or bending pliers, a screwdriver and sheet-metal chisel, sealant, MAC Cutter specialized for Polymac profile, metal blade (see recommendations), electric scissors and a MAC bending bar. You'll also need a level and a tape measure.



### ROTATING SAW

Cold-cutting rotary saws must be used with a specialized metal blade and in accordance with the manufacturer's recommendations. Please refer to the cutting guide available on our website for details of use.

## 1.1 ACCESSORIES

Here is a list of accessories for installing and finishing roof profiles:

- MAC wood or metal screws, depending on project type
- High-temperature sealing membrane
- Self-adhesive elastomeric membrane
- Steel roll
- Moldings
- Sealant

## 1.2 MAC SCREW TYPES

The use of MAC screws is highly recommended. In addition to being perfectly adapted to our profiles, they are duly tested and comply with ASTM B-117 2000h.

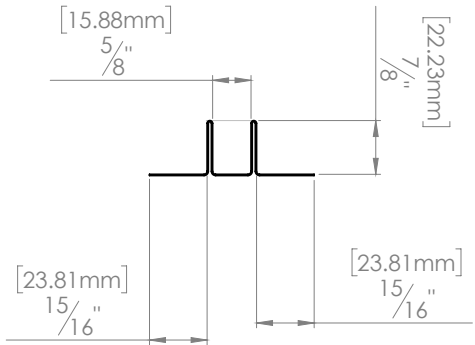
Should any other screw be used, it must comply with ASTM B-117 2000h to support the product's 40-year warranty.

Screw in with moderate contact so as not to interfere with material expansion. Screws must not exert upward or downward pressure to avoid rounding the material.

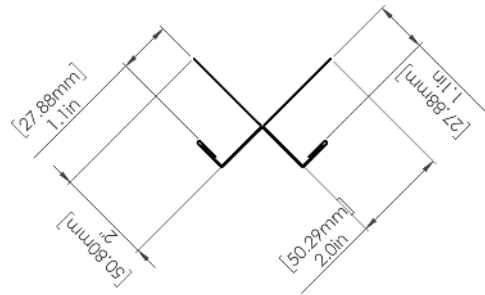


## Polymac moldings & flashing

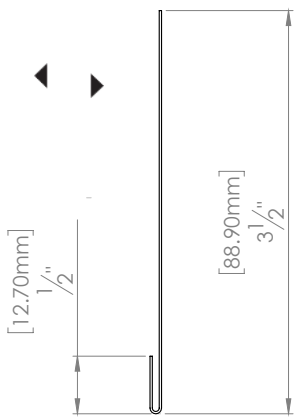
No. M15P  
"U" Trim (fixation trim)



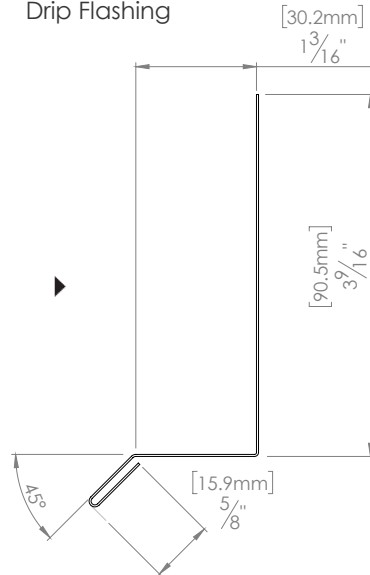
No. MXXP  
"W" Trim



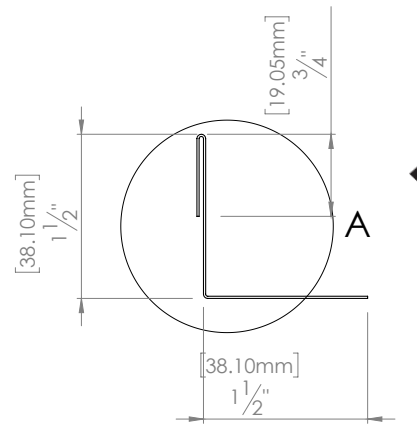
No. M10G  
Starting Strip



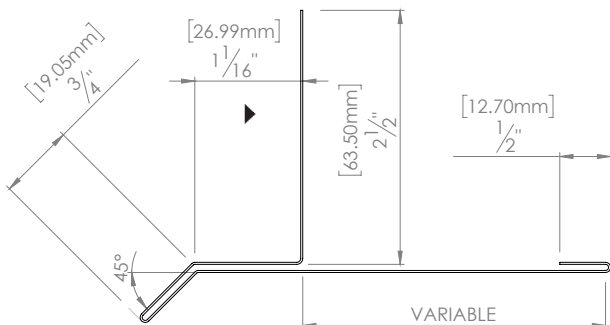
No. M50G  
Drip Flashing



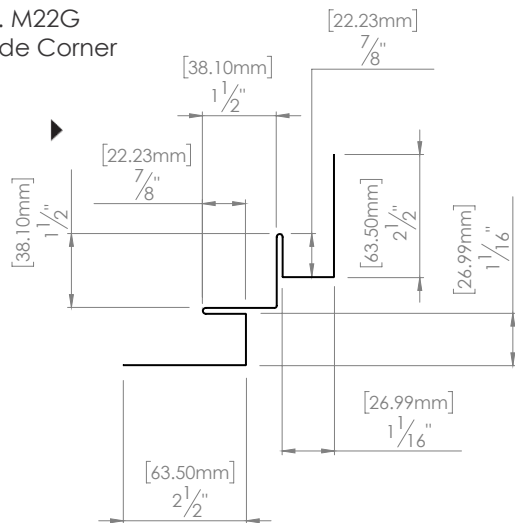
No. M14G  
L Trim



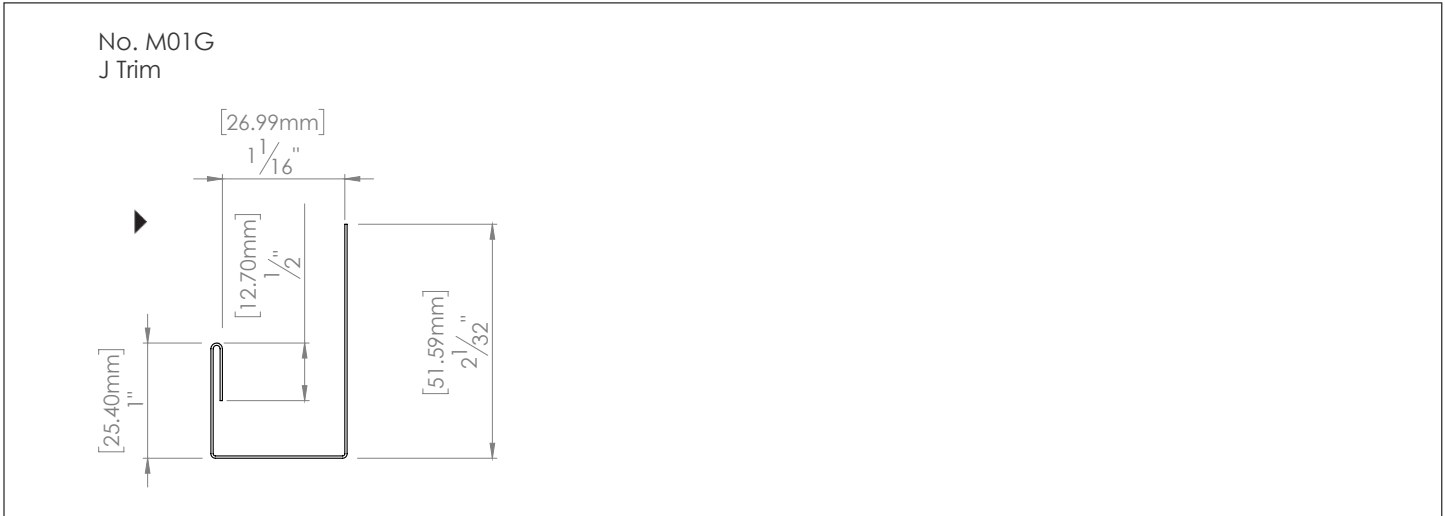
No. M56G  
Extended Drip Flashing w/variable



No. M22G  
Inside Corner



## Polymac moldings & flashing



## 2. PREPARATION

### RECOMMENDATIONS

This installation guide provides general guidelines for the installation of MAC Metal Architectural's non-recessed screw Polymac profile. Siding installation should always be performed by a steel siding installation specialist. The information contained in this guide is for informational purposes only and may not be suitable for all building types and/or climatic conditions. The examples given are valid at the time of publication. At all times, please refer to and comply with local building codes and regulations.

MAC Metal Architectural reserves the right to modify the content of this guide at any time, without prior notice. To ensure you always have the most up-to-date information, please consult our website or contact your representative.

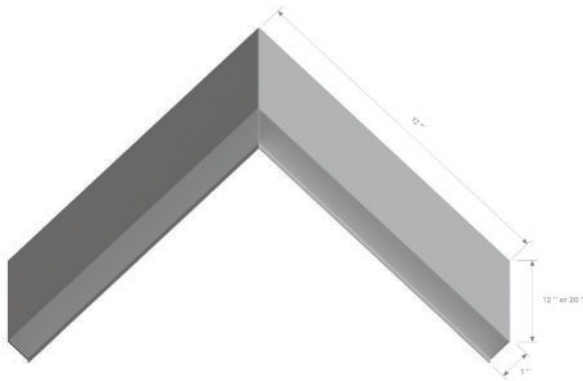
### INSULATION & VENTILATION

When designing the building, make sure that all components are properly installed, including the ventilation system needed to prevent condensation. Condensation can occur in all types of buildings, and is therefore not unique to buildings made with metal profiles. Poor ventilation can lead to moisture problems and reduced insulation efficiency.

To ensure that the best practices are used for your project, refer to a building insulation and ventilation professional. They'll be able to guide and advise you properly.

## POLYMAC PROFILE (CORNER)

The Polymac is available in 12 in (304.8 mm) x 12 in (304.8 mm) OR 20 in (508 mm) x 1 in (25.4 mm) corner panel. Its versatility makes it the most effective and affordable option on the market.



POLYMAC CORNER - 12 in (304.8 mm) x 12 (304.8 mm) OR 20 in (508 mm) x 1 in

## POLYMAC PROFILE (PANEL)

The Polymac profile is available in two different panel sizes, allowing you to choose the best option for your project. A first panel of 12 in (304.8 mm) x 48 in (1 219.2 mm) OR 72 in (1 828.8 mm) x 1 in (25.4 mm), then a second of 20 in (508 mm) x 48 (1 219.2 mm) OR 72 in (1 828.8 mm) x 1 in (25.4 mm).



POLYMAC PANEL - 12 in (304.8 mm) x 48 (1 219.2 mm) OR 72 in (1 828.8 mm) x 1 in



POLYMAC PANEL - 20 in (508 mm) x 48 (1 219.2 mm) OR 72 in (1 828.8 mm) x 1 in

Before beginning the installation of the Polymac profile, make sure that the surface you are covering meets all current industry standards. Always refer to your local building code.

## WOOD OR STEEL FURRING

Depending on construction standards in your region, wood or steel furring may be required. This guide shows you how to install MAC cladding on wood furring. However, if your region's standards do not require it, it's up to you to decide whether or not to install it. In this case, installation can be carried out directly on the recommended rigid surface covered with a weather barrier.

## CREATING AN INSTALLATION TEMPLATE

Prior to installation, we recommend that you calculate the width of the wall where you'll be installing the panels, so that you can create an installation template, if you haven't already done so, based on the size of the panels, and determine which sections will require cut panels.

### 3. INSTALLATION

#### PLASTIC FILM

Each sheet is covered with a plastic film designed to prevent damage to the surface during handling, transport or installation.

It is important to remove the plastic film BEFORE installing the mouldings and sheets, to prevent it from becoming trapped during assembly. Before you start installing the coverings, make sure your walls are perfectly square.

### 4. STARTING STRIP

It is strongly recommended to install wooden or steel purlins at a 45° angle every 12 inches centre to centre, which will ultimately give you 16 inches of centre to centre screwing.



Once the purlins have been installed, use a laser level, chalk tracer or standard level to trace a guideline in the intended direction for installing the siding.



Now place the starting strip 3" above where you will be starting your wall. As needed, use MAC 1/2" flat-head metal screws or MAC 1 1/8" flat-head wood screws. Secure it in place with a first screw. Once it is level, screw it in place.



\*\*Make sure that the starter strip is level, as it will serve as a guide for you to the rest of the installation.

#### 4.1 TRANSITION MOLDING (FIXATION)

Starting from the outside corner, secure the transition mouldings in place (fastening), making sure to install the first one 11 inches from the outside corner of the building. You then need to allow for the following distances between the transition mouldings (fastening) 48 inches for 12 x 48 and 20 x 48 panels and 72 inches for 12 x 72 and 20 x 72 panels.



#### 4.2 CORNERS AND OPENING MOLDINGS

Measure all openings, then install J Trims on the two sides and the bottom of openings. And a drip cap above the project openings.



First step in the installation of the inside corner, install an L-shaped moulding or a steel scrap folded at 90° on the inside corner.



### 4.3 OUTSIDE CORNER

Insert the first outside corner panel in the starting moulding and the transition mouldings (fastening) then secure the panel in place using screws on the purlins.



Then install the rest of the exterior corner panels to the end of the wall either by lining up with the laser if it is not the first row or with the spacers provided.



#### 4.4 PANEL INSTALLATION

Insert the first panel into the starting moulding and the transition mouldings (fastening), then secure the panel in place using screws on the purlins.



Then, install the rest of the panels of the same column at the extremity of the wall with the spacers that will serve as a guide for the distance to be tuned between your panels.



Then to proceed with the installation of the other rows, taking care to install a laser guide on the facade line at the top of the strip to be installed vertically.

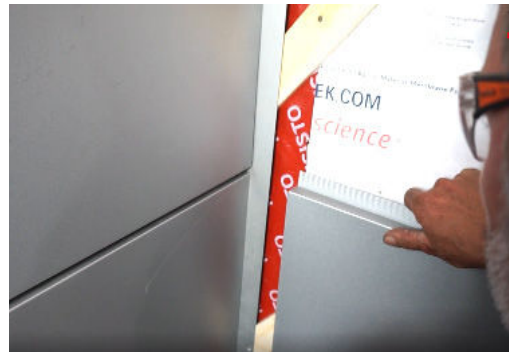


Then install the panels horizontally following the line of the laser guide on the top facade line.



#### 4.5 INSIDE CORNER

To finish the inside corner, all the panels of the first wall will have to be installed to the end of the wall and the panels of the adjacent wall will sit on top to create an overlap of panels.



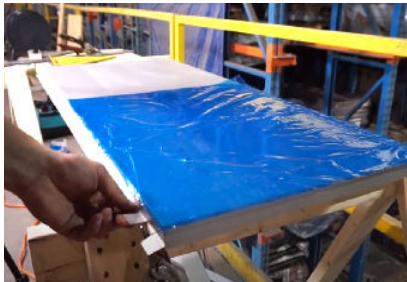
#### 4.6 VERTICAL CUT ON A PANEL

If a panel needs to be cut, measure the transition moulding (fastening) up to the inside corner or a J Trim, then cut the panel.



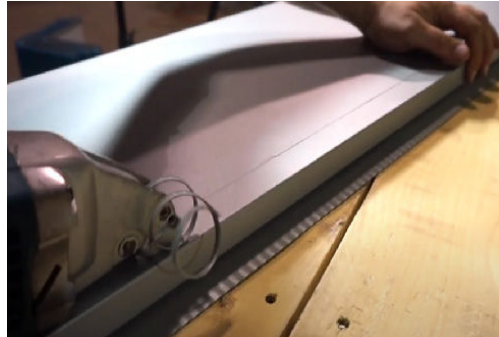
#### 4.7 MANUAL FOLDING AFTER VERTICAL CUTTING OF A PANEL

- a. In the situation that you have to cut the panel vertically and then recreate a company fold that will be seen and not hidden in the J-trim.
- b. Measure between two mouldings
- c. Trace this same measurement on the panel and measure an extra inch that will be folded by the folding machine.
- d. On the other hand, the male and female must be cut to the size you need in front of your panel.
- e. Remove 1 1/2'' of your styrofoam to allow the folder to pass through.
- f. Cut the panel with steel wishbones or a metal sheer
- g. Place the panel in the folding machine and raise the arm to fold it into place.



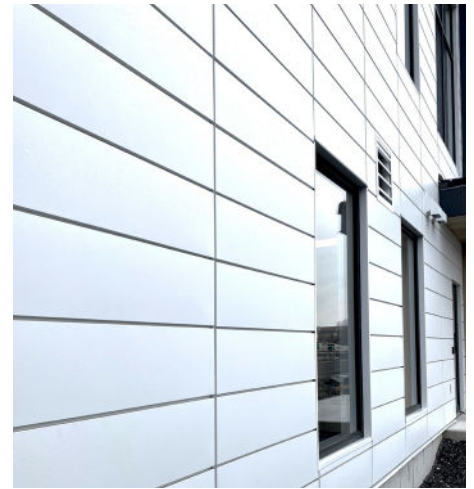
#### 4.8 HORIZONTAL CUT (END OF WALL)

In the event that a horizontal cut of a panel is required at the end of the wall, take the measurement between the roof truss and the previous panel. Remove  $\frac{1}{2}$ " to the measurement for the spacing between panels. This will give you the measurement for your final panel.



Once all the end-of-wall panels are installed, secure the panels by installing a J Trim on the roof truss





---

For more information on the installation of the Polymac profile, visit the PRO Space section of our website, [MACmetalarchitectural.com](http://MACmetalarchitectural.com), or our Youtube channel.

You'll find a bank of technical information about the profile, including a series of installation videos, molding booklets, and technical drawings.



---

MAC Metal Architectural  
5975 Ch. de la Savane,  
Saint-Hubert, QC J3Y 0X1  
T. 450 464-5486 | T F. 450 464-4538  
[info@MACmetalarchitectural.com](mailto:info@MACmetalarchitectural.com)  
[MACmetalarchitectural.com](http://MACmetalarchitectural.com)