

ORDER FORM

ARCHITECTURAL PLANK



PUSHING
THE ENVELOPE

CUSTOMER INFORMATION |

Customer name: _____ Customer ref. no.: _____ Tel : _____

Contact person: _____ E-mail: _____

Customer address: _____ Project name : _____

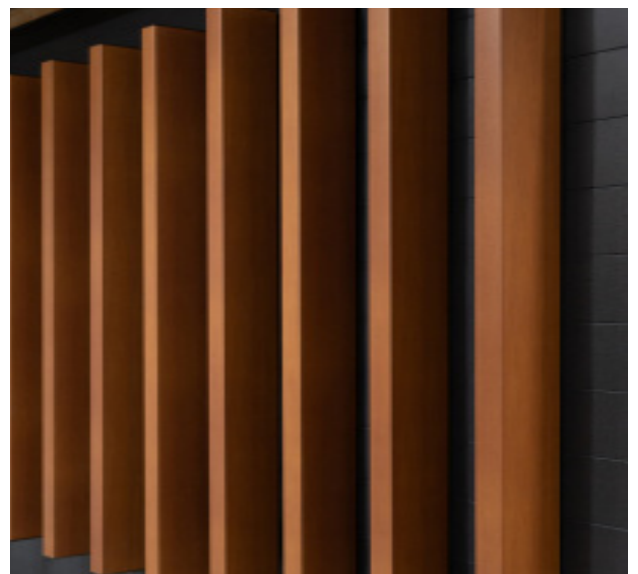
MAC Metal's architectural planks offer a great alternative to natural wood. They can bring your most creative ideas to life and transform your driveway, garden, or terrace into a distinctive, personal expression.

The architectural planks from MAC are adaptable and can be cut to lengths of up to 3 feet. They come with a series of components for easy installation, allowing you to create any design you like.

They are sold in minimum quantities of 14 planks, with each plank being 12 feet long and including two caps. Each order contains 2 drilling templates.

Fastening kits and additional caps are sold separately, so it's important to determine your needs.

Please fill out the following form and return it with your order to ensure you have everything you need for your installation.



Installation guides and videos are available on our website and on our YouTube channel at any time.



ORDER FORM



PUSHING
THE ENVELOPE

ARCHITECTURAL PLANK

STEPS |

- No1. Create the desired installation pattern.
- No2. Determine the length at which you will cut the planks, which will give you the quantity of planks required.
- No3. Calculate how many additional caps you'll need.
- No4. Calculate the number of fixation kits you'll need.
- No5. Fill in the table below, adding the quantities required and the color code for the planks.
- No6. Return it to customer service to place your order at | commande@macmetalarchitectural.com

FORMS |

Description	Product Code	Quantity	Color
Architectural Planks (14 minimum)	SLIDG24-		
Cap, pack of 10	ACLID.10		
Fixing Bracket Kit, individual	ABLID		
Fixing Bracket Kit, pack of 10	ABLID.10		
Drilling guide, additional	AGPLID		

COLOR CODE |

Wood COLLECTION
301-Torrefied
302-Cedar
303-Black Walnut
304-Smoked Birch
305-Ash Grey
306-Scandinavian Fir
310-White Oak
312-Teak
313-Cork

Inspiration COLLECTION
101-Titanium White
102-Titanium Black

SPECIFICATIONS |

FASTENING KIT RECOMMENDED PER PLANK LENGTH

Plank from 3' to 6' long = minimum of 2 per plank
Plank from 6' to 9' long = minimum of 3 per plank
Plank from 9' to 12' long = minimum of 4 per plank

FIXING KIT INDIVIDUAL INCLUDES

1 x L-shaped fixing bracket,
2 x bolts,
2 x rivet nuts,
2 x painted-head wood screws

PLANKS DIMENSIONS

Gauge | 24 gauges
Width | 2 in (50.8 mm)
Depth | 5.25 in (133.35 mm)
Length | 144 in (3,657.6 mm)

