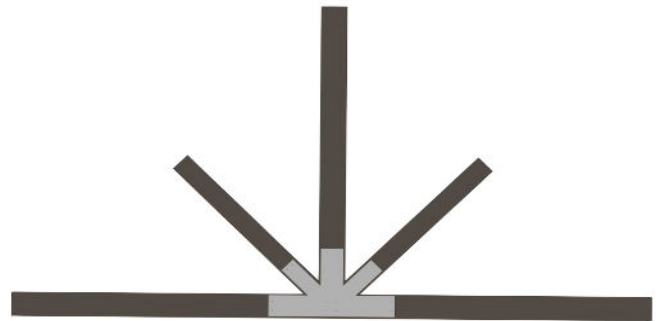




Installation Guide

GABLE ORNAMENT
Farmhouse Series



THE BEAUTY AND
RICHNESS OF WOOD
without the maintenance!

THE PERFECT STYLE COMPLEMENT FOR YOUR PROJECT!

The Farmhouse Series Gable Ornament for Board and Batten & Reverse Board and Batten profiles will add the finishing touch to any design! Available in the same color collections as these profiles, it will allow you to add dimension and a touch of warmth to your home, all without maintenance, allowing you to spend your time where it really counts!



ATTENTION

PROTECTION

The material may have sharp edges. We recommend using protective equipment, including safety boots, helmet, goggles, and gloves.



WARRANTY

The installation must be carried out in accordance with the standards established by the building code in force and according to the manufacturer's recommendations in order for the warranty to apply. In the event that a problem occurs during the installation of the Gable Ornament, it is important to notify the distributor before installation to ensure that the warranty applies.

INSPECTION

When you receive your order, it is important to inspect the product immediately. If there are any issues with your order or if the Gable Ornament arrives damaged, you should inform your supplier as soon as possible

STORAGE

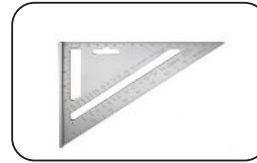
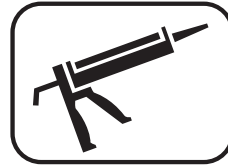
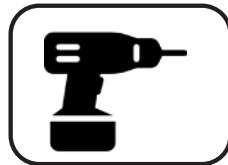
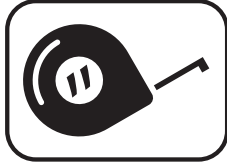
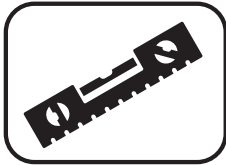
In order to maintain the aesthetic and physical properties of MAC Metal Architectural's Gable Ornament accessory, it is important to follow certain storage rules.

If the Ornament cannot be installed immediately after delivery, store it indoors in a dry, well-ventilated area. Customers are responsible for the risks associated with storing the Ornament outdoors. If the material must be stored outdoors, here are some recommendations:

Place the ornament in an area that is not directly exposed to sunlight or extreme temperatures, as these factors can cause the protective film to adhere more strongly to the panels than normal. This makes the film difficult to remove and can leave glue marks on the panels.

1. TOOLS

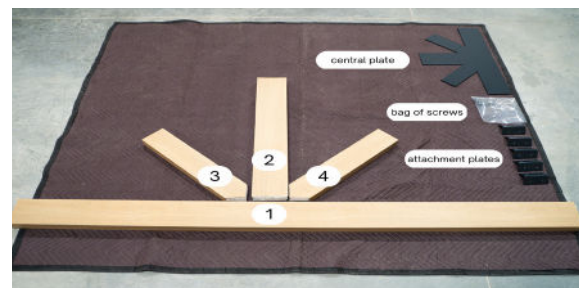
In order to carry out the installation properly, you will need a screwdriver, sheet metal scissors, sealant, a square, a cold-cut rotary saw and a metal blade (following the cutting recommendations indicated on our site). You will also need a level and a measuring tape.



2. CONTENTS OF THE BOX

Here is the list of contents included in the Ornament's box.

- 1 x piece #1 (for horizontal fixation)
- 1 x piece #2 (for vertical fixation)
- 1 x piece #3 (for diagonal fixation)
- 1 x piece #4 (for diagonal fixation)
- 1 x MAC anthracite head screw bag
- 1 x center plate
- 5 x attachment plates



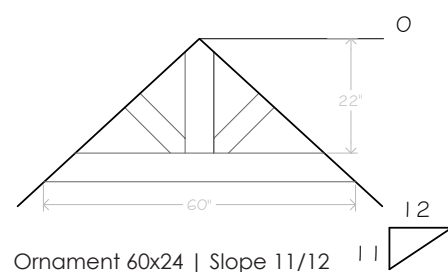
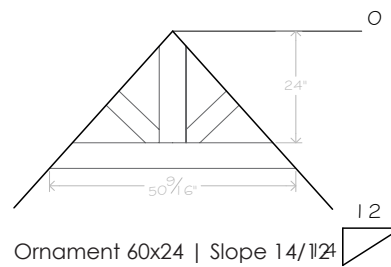
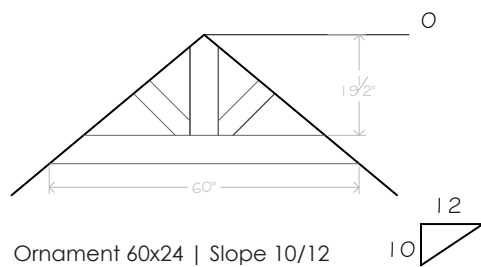
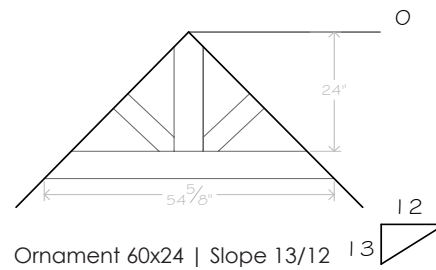
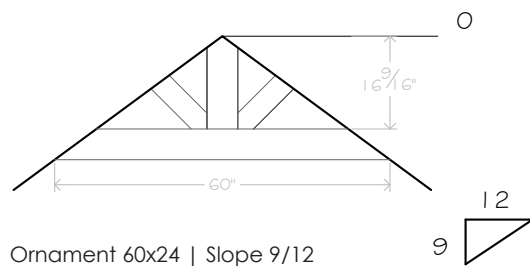
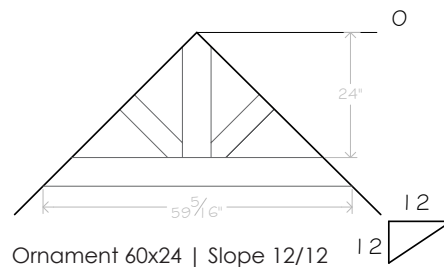
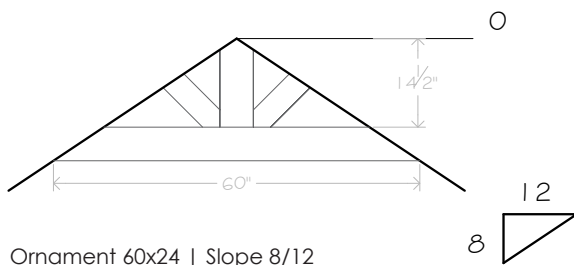
3. THE SLOPES

The Farmhouse Series Gable Ornament are offered in 3 distinct sizes to meet the industry's requirements as closely as possible.

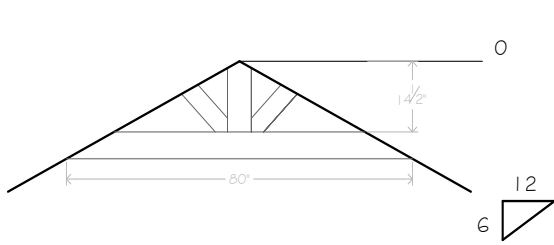
- Ornament 60 in x 24 in | Slope 8/12 to 12/12
- Ornament 80 in x 32 in | Slope 6/12 to 12/12
- Ornament 110 in x 48 in | Slope 6/12 to 12/12

For information purposes only, you will find below the most common slopes by format. Please note that the slopes encountered on each site may vary from those suggested in this guide.

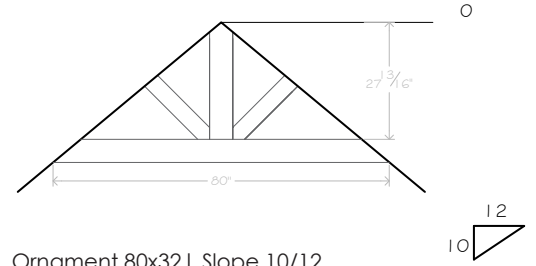
Ornament 60 in x 24 in | Slope 8/12 to 12/12



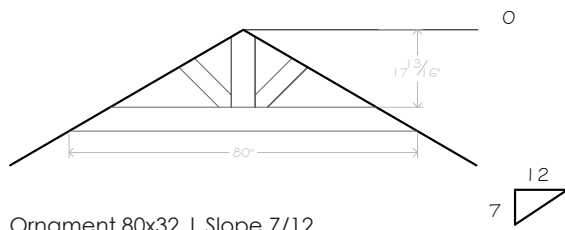
Ornament 80 in x 32 in | Slope 6/12 to 12/12



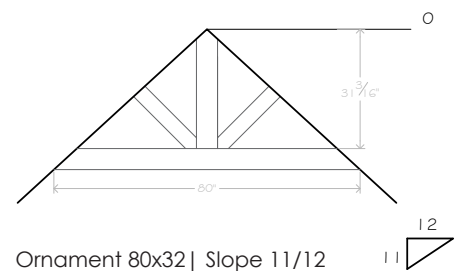
Ornament 80x32 | Slope 6/12



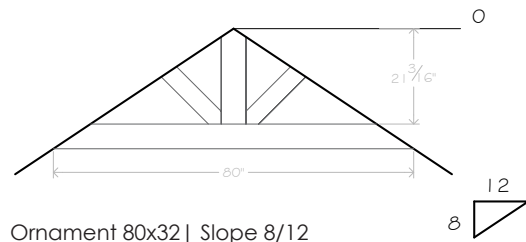
Ornament 80x32 | Slope 10/12



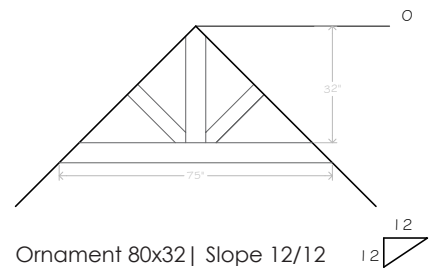
Ornament 80x32 | Slope 7/12



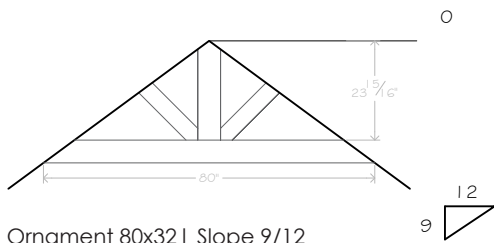
Ornament 80x32 | Slope 11/12



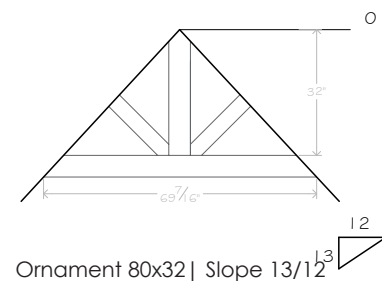
Ornament 80x32 | Slope 8/12



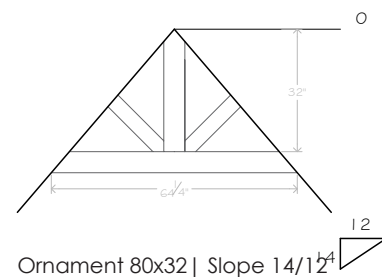
Ornament 80x32 | Slope 12/12



Ornament 80x32 | Slope 9/12

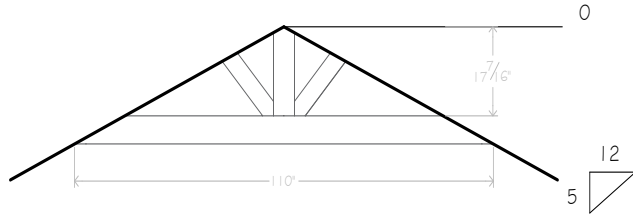


Ornament 80x32 | Slope 13/12

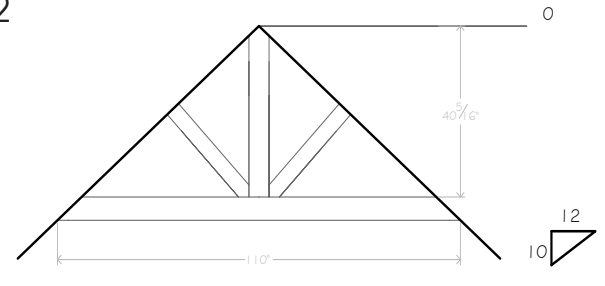


Ornament 80x32 | Slope 14/12

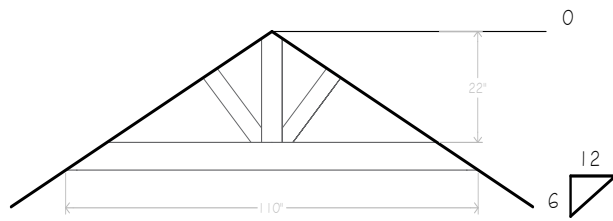
Ornament 110 in x 48 in | Slope 5/12 to 12/12



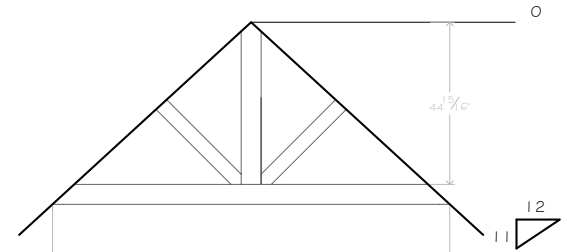
Ornament 110x48 | Slope 5/12



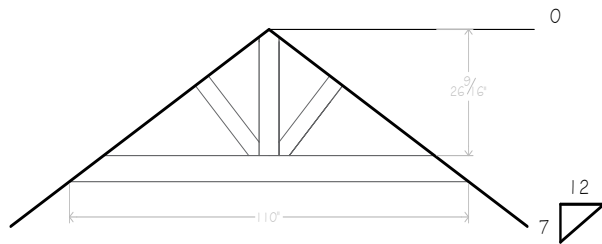
Ornament 110x48 | Slope 10/12



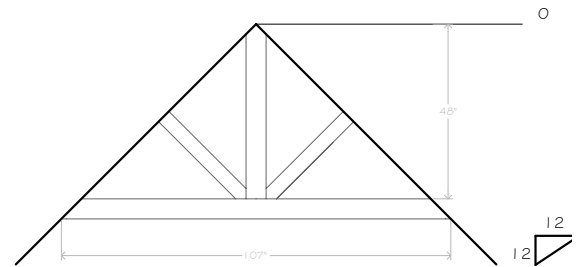
Ornament 110x48 | Slope 6/12



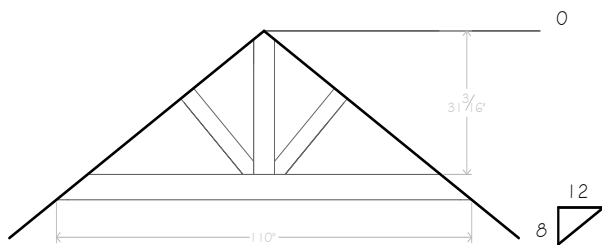
Ornament 110x48 | Slope 11/12



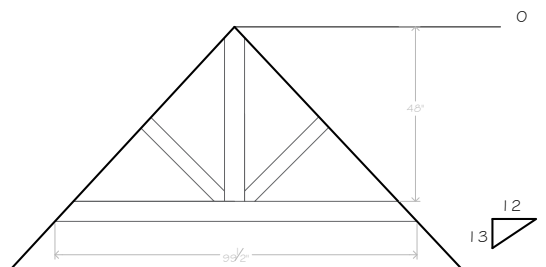
Ornament 110x48 | Slope 7/12



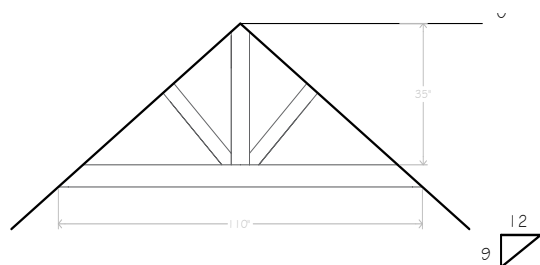
Ornament 110x48 | Slope 12/12



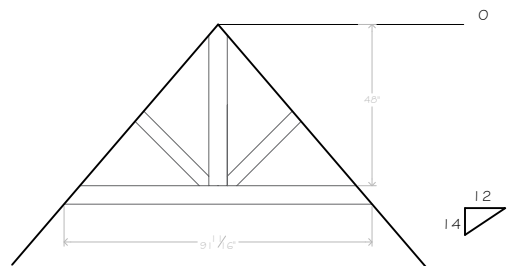
Ornament 110x48 | Slope 8/12



Ornament 110x48 | Slope 13/12



Ornament 110x48 | Slope 9/12



Ornament 110x48 | Slope 14/12

4. PREPARATION

Before taking the first step to install the arch on the gable, be sure to reinforce the screw space in the gable so that you have the necessary support to accommodate the Ornament once assembled.

5. INSTALLATION

In order to achieve a perfect installation, be sure to follow the following steps in order.

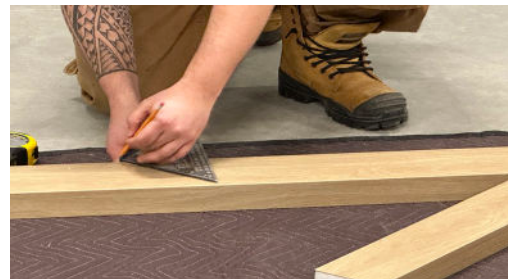
The arch is made of steel and reinforced with foam inside, so it is important that the measurements taken to make the cuts are accurate. Once the cuts have been made, there is no turning back. Ideally, we recommend that you do this step BEFORE installing the attachment plates to avoid damaging the material. Also, note that this will reduce the height of the Ornament. Please also note that an additional center plate can be obtained, but must be ordered separately.

5.1 STEP 1 | PIECE #1 (HORIZONTAL)

5.1.1 Measure from long point to long point to determine the measurement of piece #1.



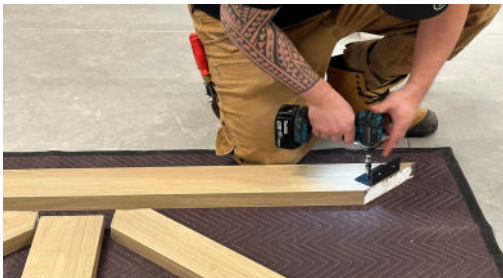
5.1.2 Then, find the angle of the Gable with a square or a false square, then trace it on piece #1.



- 5.1.3 Bevel the previously marked measurements using a cold cutting tool, electric shears, or sheet metal scissors. Please refer to the cutting guide available on our website for this part. AFTER EACH CUT, always make sure that the adjustments are adequate before proceeding to the next step.

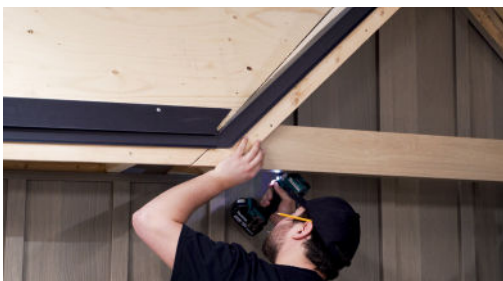


- 5.1.4 Install the attachment plates on the back of the panel. You can easily identify the back of the panel by the fold line.



5.2 STEP 2 | PIECE #2 (VERTICAL)

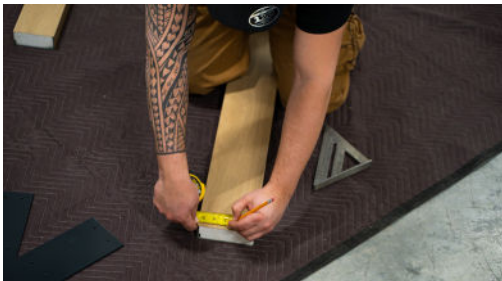
- 5.2.1 In order to determine the measurement of piece #2, fasten piece #1 in place.



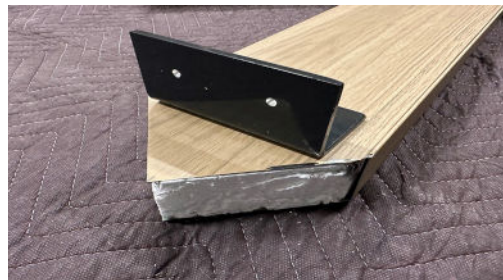
5.2.2 Then, measure from the inside of the Ornament to piece #1.



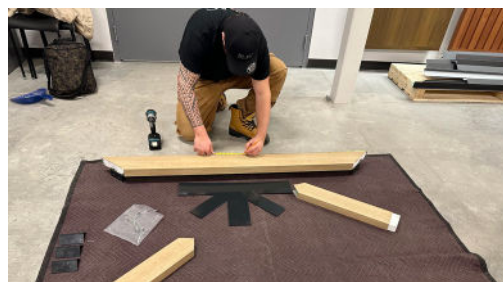
5.2.3 Find the center of piece #2, then bring back the angles taken earlier for cutting piece #1. Transfer these angles to piece #2 from the center.



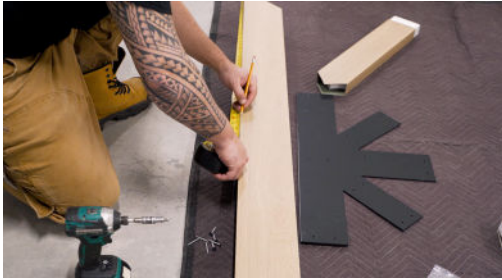
5.1.4 Once the measurements have been transferred, cut piece #2. Make sure that the adjustments are correct, then install the attachment plate.



5.1.5 Before proceeding to the next step, make sure that the adjustments are correct before removing piece #1. Then return to the flat surface with pieces #1 and #2 to attach the center plate.



- 5.1.6 To attach the center plate, find the center of the plate, then the center of piece #1. Secure the plate in place, then repeat the step for piece #2.



5.3 STEP 3 | PIECES #3 & 4 (DIAGONAL)

- 5.3.1 Once you have installed pieces #1 and #2 on the center plate, continue with a straight piece to find the measurements of pieces #3 and #4. Trace your measurement, then cut before installing it on the center plate.

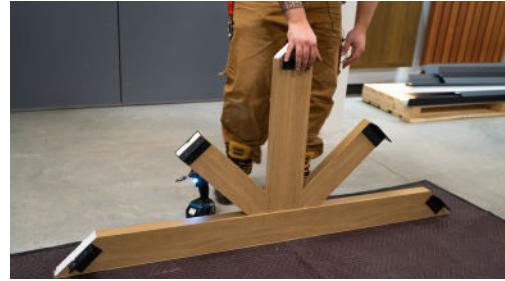


- 5.3.2 Next, attach the remaining attachment plates to pieces #3 and #4.



9.6 THE SEALANT

Before proceeding with the final installation of the Gable, apply an Adfast type sealant that matches the MAC colors in the junction of the back pieces. You can refer to our sealant color chart available on our website at macmetalarchitectural.com



9.7 THE FINAL INSTALLATION

Finally, install the Gable at the desired location.





For more information on the installation of the Farmhouse Series Gable Ornament, visit the *Accessories* section of our website, [MACmetalarchitectural.com](https://www.MACmetalarchitectural.com) or our Youtube channel.

You will find a bank of technical information on all of our compatible products, such as a series of installation videos and molding booklets, in addition to access to our technical drawings.



MAC Metal Architectural
5975 Ch. de la Savane,
Saint-Hubert, QC J3Y 0X1
T. 450 464-5486 | T. F. 450 464-4538
info@MACmetalarchitectural.com
[MACmetalarchitectural.com](https://www.MACmetalarchitectural.com)