

POLYVALENT ARCHITECTURAL PANELS

STYLE AND CHARACTER

MAC Metal's POLYMAC architectural panels combine style, strength and efficiency. The strength of this panel's design lies not only in its adjustable and flexible side, but also in the complementary accessories available. The Polymac panel is the most efficient and affordable alternative on the market.

Their standard sizes make them easy to measure and quick to install. The panels are reinforced at the end with a foam panel.

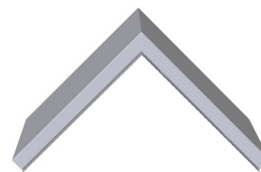
Offered in boxes in a variety of standard sizes.



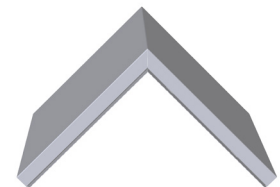
Panel
12 x 48 in & 12 x 72 in



Panel
20 x 48 in & 20 x 72 in



Corner panel
12 x 12 x 12 in



Corner panel
12 x 12 x 20 in

Specifications

Standard panel sizes

SPPG24.12X48: 12 x 48 in (304,8 x 1219.2 mm)

SPPG24.12X72: 12 x 72 in (304,8 x 1828.8 mm)

SPPG24.20X48: 20 x 48 in (508 x 1219.2 mm)

SPPG24.20X72: 20 x 72 in (508 x 1828.8 mm)

Vented panels

SVPPG24.12X48: 12 x 48 in (304,8 x 1219.2 mm)

SVPPG24.12X72: 12 x 72 in (304,8 x 1828.8 mm)

Corner panels

SPCG24.12: 12 x 12 x 12 in (304,8 x 304,8 mm)

SPCG24.20: 12 x 12 x 20 in (508 x 304,8 mm)

Polymac moldings

M15P : U Trim

MXXP : W Trim

M01P : Finition J Trim

In addition to being compatible with the Versa moldings series

ARCHITECTURAL PANELS

MAC

METAL ARCHITECTURAL

Let your imagination run wild!

Features

- › Steel panel adjustable on site
- › Predefined sizes that facilitates the process for taking measurements
- › Fast production lead times
- › Matching molding
- › Affordable
- › Maintenance-free
- › Easy to install
- › 40-year warranty
- › LEED Credit Contribution



MAC Textural Technology

WOOD Collection



SIGNATURE Collection



Colors with rich and unique matte finishes that perfectly reproduce the look and feel of noble materials such as zinc and wood.

INSPIRATION Collection

